

## Erratum

# Exogenous glutathione contributes to cisplatin resistance in lung cancer A549 cells: Am J Transl Res. 2018; 10(5): 1295-1309

Dong Lan<sup>1#</sup>, Li Wang<sup>2#</sup>, Rongquan He<sup>1</sup>, Jie Ma<sup>1</sup>, Yehong Bin<sup>1</sup>, Xiaojv Chi<sup>1</sup>, Gang Chen<sup>3\*</sup>, Zhengwen Cai<sup>2\*</sup>

<sup>1</sup>Department of Medical Oncology, First Affiliated Hospital of Guangxi Medical University No. 6 Shuangyong Road, Nanning 530021, Guangxi Zhuang Autonomous Region, P. R. China; <sup>2</sup>Department of Medical Oncology, Second Affiliated Hospital of Guangxi Medical University No. 166 Daxuedong Road, Nanning 530007, Guangxi Zhuang Autonomous Region, P. R. China; <sup>3</sup>Department of Pathology, First Affiliated Hospital of Guangxi Medical University No. 6 Shuangyong Road, Nanning 530021, Guangxi Zhuang Autonomous Region, P. R. China. #Equal contributors and co-first authors. \*Equal contributors.

Received December 21, 2019; Accepted December 22, 2019; Epub January 15, 2020; Published January 30, 2020

In this article published in AJTR0073113, in the original paper by Lan D, et al., entitled “Exogenous glutathione contributes to cisplatin resistance in lung cancer A549 cells”, there are errors in the texts in the ‘Materials and Methods’ parts as well as **Figure 4**. In line 32, the third paragraph, right side of page 1297: “if” should be corrected into “of”. **Figure 4** on page 1302 contains a misplaced picture. The authors confirm that all of the published results and conclusions of the paper remain unchanged, as well as the figure legends. The authors apologize for any confusion caused.

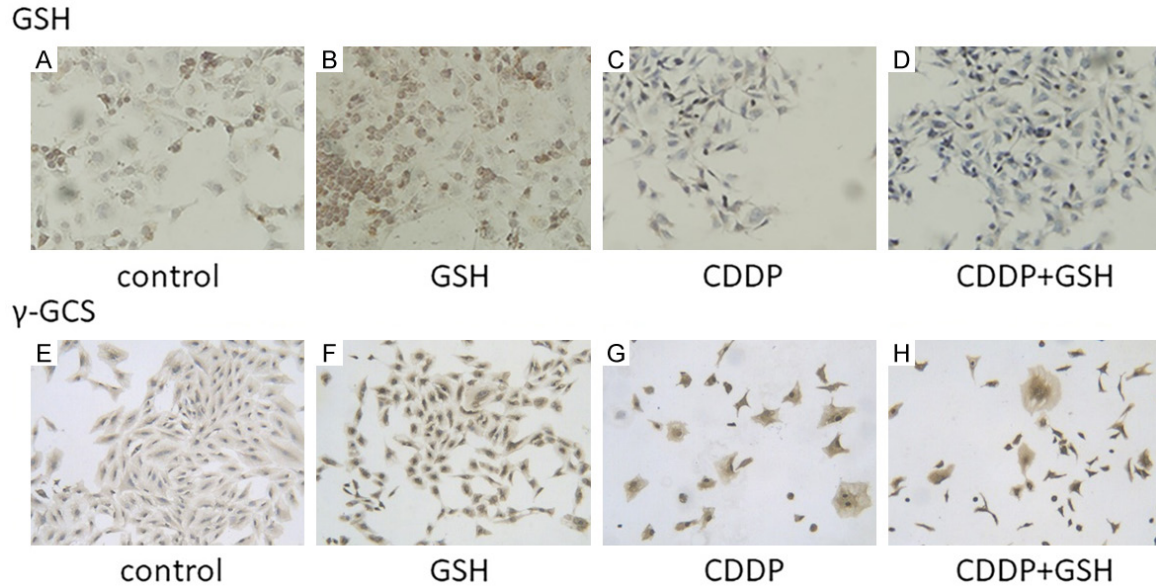
The corrected sentence and figure are shown as follows, together with the page numbers.

1) On page 1297: “Analysis of intracellular GSH level by immunohistochemistry (IHC)”.

2) On page 1302, the correct **Figure 4** should be:

**Address correspondence to:** Zhengwen Cai, Department of Medical Oncology, Second Affiliated Hospital of Guangxi Medical University, No. 166 Daxuedong Road, Nanning 530007, Guangxi Zhuang Autonomous Region, P. R. China. E-mail: 99CCZZWW@sina.com; Gang Chen, Department of Pathology, First Affiliated Hospital of Guangxi Medical University, Nanning, Guangxi Zhuang Autonomous Region, P. R. China. E-mail: chen\_gang\_triones@163.com

## Exogenous glutathione induces cisplatin resistance in lung cancer



**Figure 4.** IHC analysis of GSH and  $\gamma$ -GCS expression in the control group, GSH group, CDDP group and CDDP+GSH group. A, E: Untreated A549 cells. B, F: A549 cells treated with 120  $\mu$ g/ml GSH for 48 h. C, G: A549 cells treated with 10  $\mu$ g/ml CDDP for 48 h. D, H: A549 cells treated with 10  $\mu$ g/ml CDDP+120  $\mu$ g/ml GSH for 48 h. A-D: IHC analysis of GSH expression. E-H: IHC analysis of  $\gamma$ -GCS expression.