

Erratum

Tongxinluo inhibits neointimal formation by regulating the expression and post-translational modification of KLF5 in macrophages: Am J Transl Res. 2016; 8(11): 4778-4790

Wen Jiang, Bin Zheng, Xin-Hua Zhang, Ling-Yan Yue, Chan Liu, Dong Ma, Zhan Yang, Jin-Kun Wen

Department of Biochemistry and Molecular Biology, Key Laboratory of Neural and Vascular Biology, Ministry of Education, Hebei Medical University, Shijiazhuang 050017, PR China

Received November 18, 2020; Accepted November 29, 2020; Epub December 15, 2020; Published December 30, 2020

The original version of this article contains two errors in **Figures 2B** and **5D**. In **Figure 2**, the western blot image of KLF5 in panel B was inadvertently duplicated from Figure 4A; In **Figure 5**, panel D was inadvertently duplicated from panel C of Figure 6. **Figures 2B** and **5D** should be corrected as follows.

The corrections made in this erratum do not affect the original conclusions.

Address correspondence to: Dr. Jin-Kun Wen, Department of Biochemistry and Molecular Biology, Hebei Medical University, Shijiazhuang 050017, PR China. Tel: +86-311-86265563; Fax: +86-311-86-266180; E-mail: wjk@hebmh.edu.cn

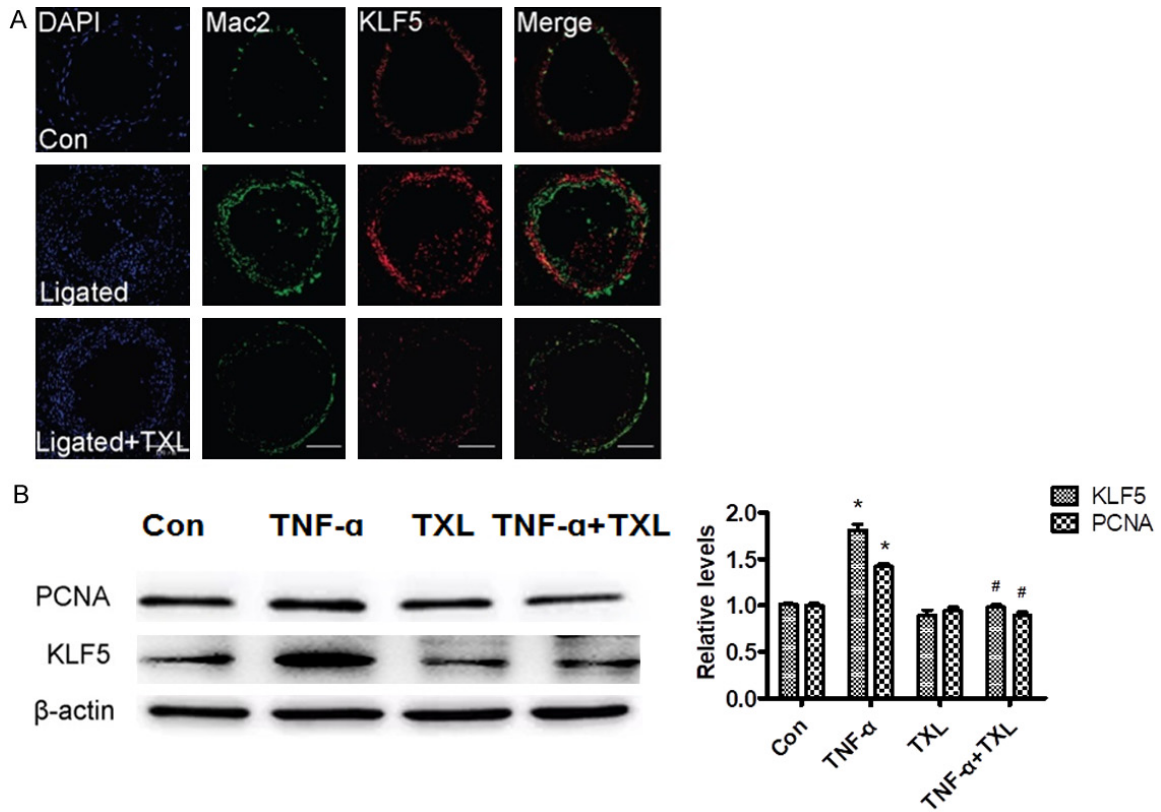


Figure 2. TXL inhibits macrophage infiltration through suppressing KLF5 expression. A. Immunofluorescence staining for Mac-2 (green), KLF5 (red), and DAPI (blue) in unligated, ligated, and ligated plus TXL-treated carotid arteries on day 14 after carotid ligation. Scale bars = 100 μ m. B. The expression of KLF5 and PCNA in RAW264.7 cells treated with indicated conditions was detected by Western blotting. Bars represent the means \pm SD from three independent experiments. * P <0.05 vs. Con group; # P <0.05 vs. TNF- α group.

Tongxinluo regulates KLF5 ubiquitination and sumoylation

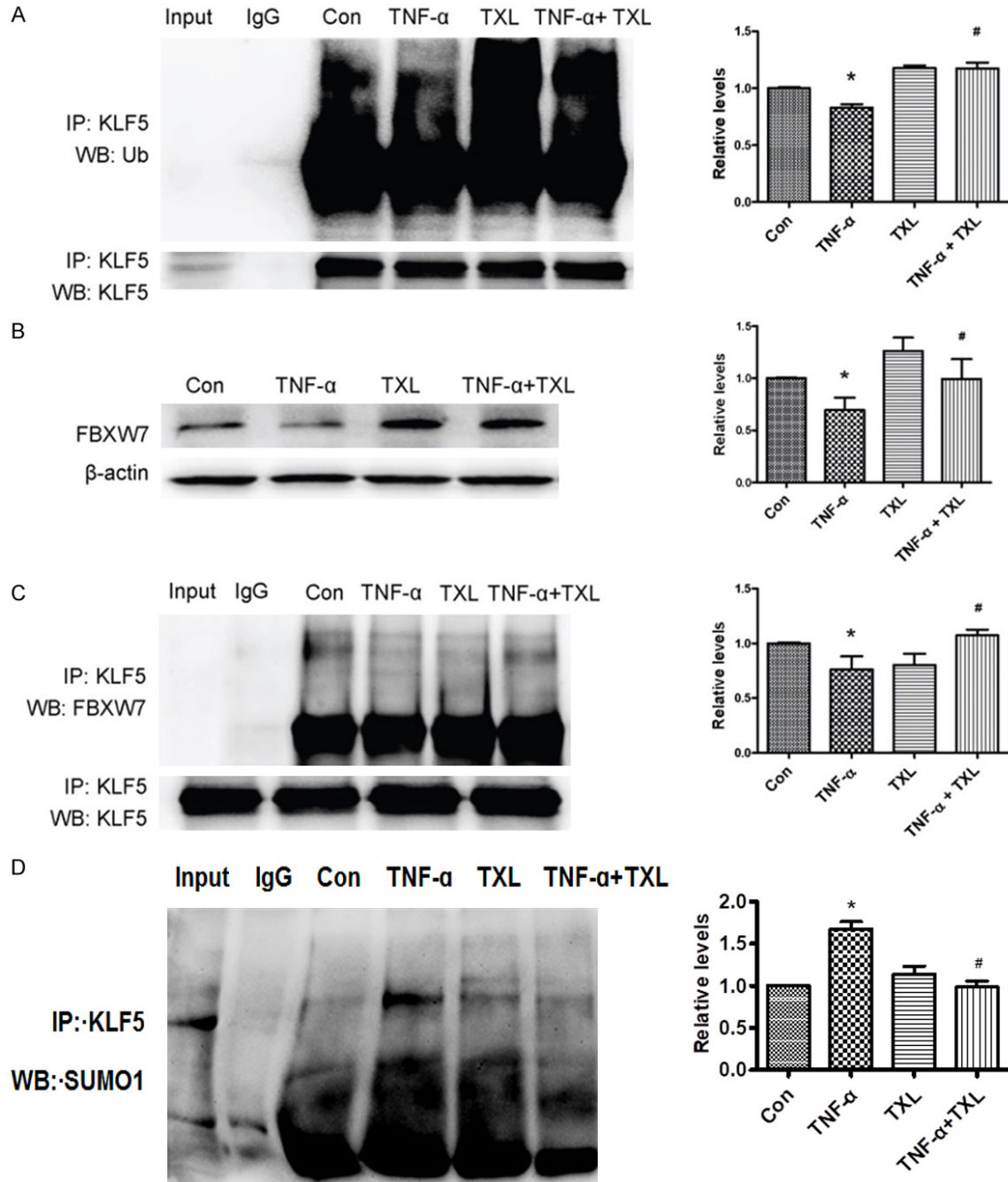


Figure 5. TNF- α increases, while TXL reduces KLF5 level through regulating the ubiquitination and sumoylation of KLF5. (A) The lysates from TNF- α -, TXL, or TNF- α plus TXL-treated macrophages were immunoprecipitated with anti-KLF5, and then detected by Western blotting with anti-ubiquitin. Bars represent the means \pm SD from three independent experiments. *P<0.05 vs. Con group; #P<0.05 vs. TNF- α group. (B) Western blot analysis for Fbxw7 expression in macrophages treated as in (A). Bars represent the means \pm SD from three independent experiments. *P<0.05 vs. Con group; #P<0.05 vs. TNF- α group. (C) The lysates from macrophages treated as in (A) were immunoprecipitated with anti-KLF5, and then detected by Western blotting with anti-Fbxw7. Bars represent the means \pm SD from three independent experiments. *P<0.05 vs. Con group; #P<0.05 vs. TNF- α group. (D) The lysates from macrophages treated as in (A) were immunoprecipitated with anti-KLF5, and then detected by Western blotting with anti-SUMO-1. Bars represent the means \pm SD from three independent experiments. *P<0.05 vs. Con group; #P<0.05 vs. TNF- α group.