

Erratum

Long non-coding RNA LINC01116 is overexpressed in lung adenocarcinoma and promotes tumor proliferation and metastasis: Am J Transl Res. 2020; 12(8): 4302-4313

Lizhong Zeng, Xin Lyu, Jingyan Yuan, Wei Wang, Nannan Zhao, Boxuan Liu, Ruiying Sun, Xia Meng, Shuanying Yang

Department of Respiratory Medicine, The Second Affiliated Hospital of Xi'an Jiaotong University, Xi'an, Shaanxi, China

Received January 16, 2021; Accepted February 4, 2021; Epub April 15, 2021; Published April 30, 2021

During **Figure 5B** preparation, we inadvertently put the transwell image from siRNA1 group into siRNA2 group. We have now corrected **Figure 5B** with correct image. The corrected figure appears below. The error does not affect the results in the paper or the interpretation of the data. We apologize for any trouble may have caused.

Address correspondence to: Shuanying Yang, Department of Respiratory, The Second Affiliated Hospital of Xi'an Jiaotong University, Xi'an, Shaanxi, China. Tel: +86-13991392919; Fax: +86-29-876785-99; E-mail: yangshuanying66@163.com

LINC01116 promotes poor lung adenocarcinoma outcomes

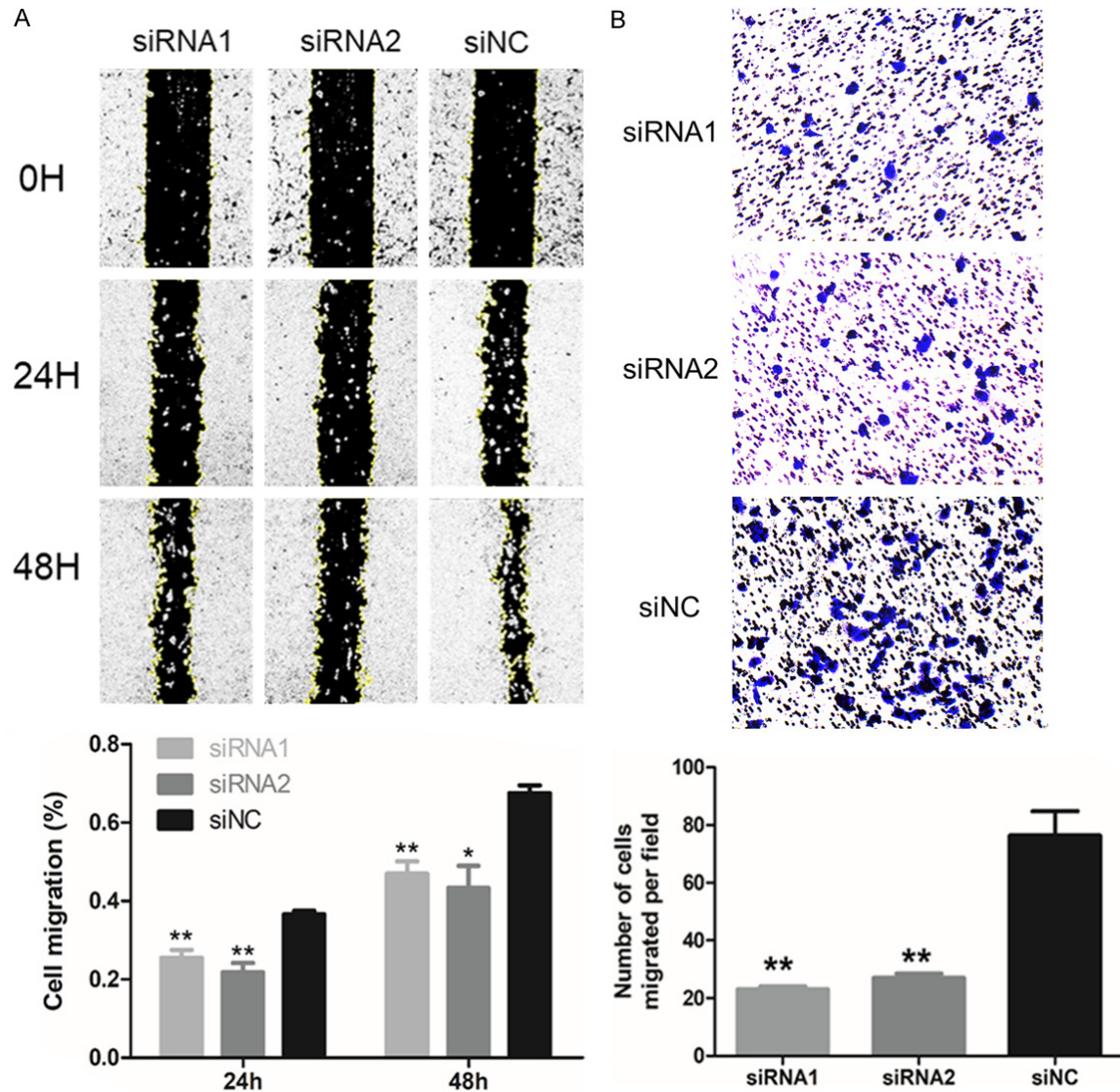


Figure 5. Downregulation of LINC01116 significantly suppressed LUAD cell migration. A. Scratches were made when transfected cells reached 100% confluence in 6-well plates and then, cells were cultured in low serum medium (1% FBS). Images were acquired at 0, 24, and 48 h after making scratches. The wound healing area in LINC01116-downregulated groups was significantly decreased after 24 h and 48 h. * $P < 0.05$, ** $P < 0.01$. B. Transfected cells were seeded in upper chambers with 200 μ l FBS-free medium, and 600 μ l medium with 10% FBS was added to the lower chambers. After incubating for 24 h, the cells were fixed with paraformaldehyde and stained with crystal violet. We acquired images and calculated the number of cells that had migrated to the lower chamber. The number of migrated cells was significantly lower in the LINC01116-downregulated groups relative to the negative control group. ** $P < 0.01$.